



INTIMIDATOR TRIGGER INSTALLATION

The following is a step by step guide to help you install our trigger on you Intimidator.

Tools you will need:

1/16 Allen key

5/64 Allen key

3/32 Allen key

Step 1

Remove grips from marker.



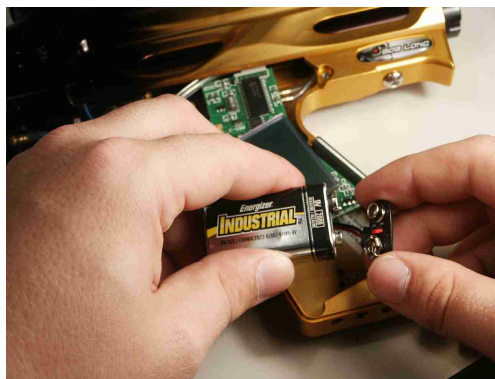
Step 2

Remove top of clamshell from marker.



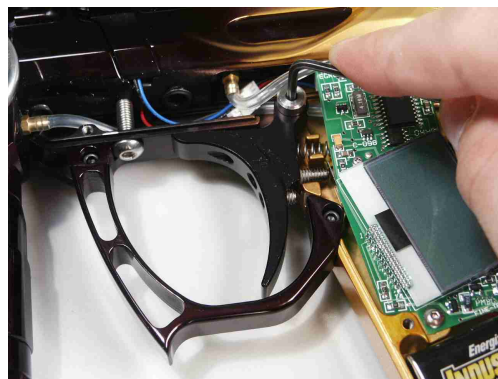
Step 3

Remove battery.



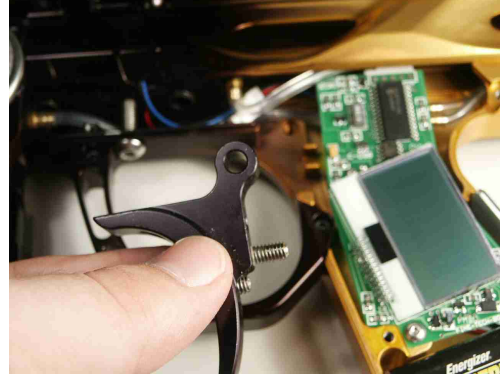
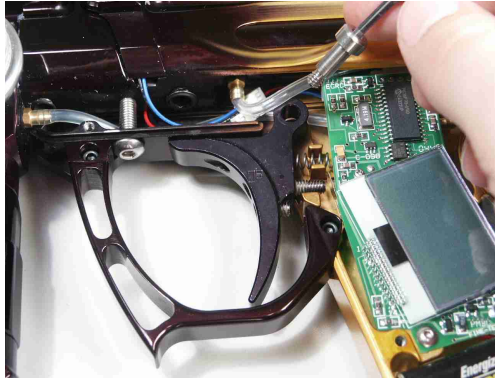
Step 4

Remove stock trigger attachment screw with 3/32 allen key.



Step 5

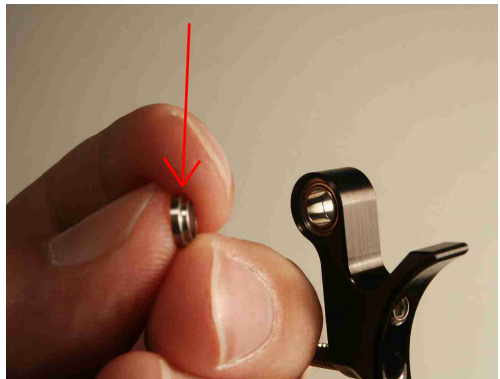
Remove stock trigger.



You should have your CP trigger with screw and spacer ready to install.

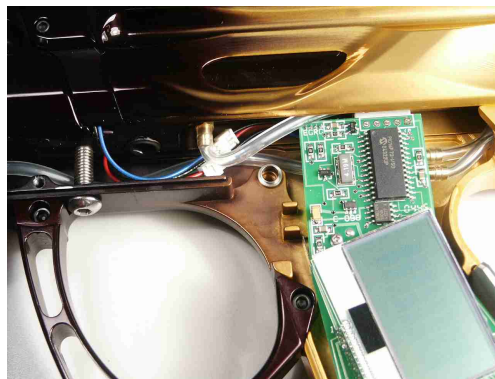


Stepped side of spacer should be facing towards the bearings.



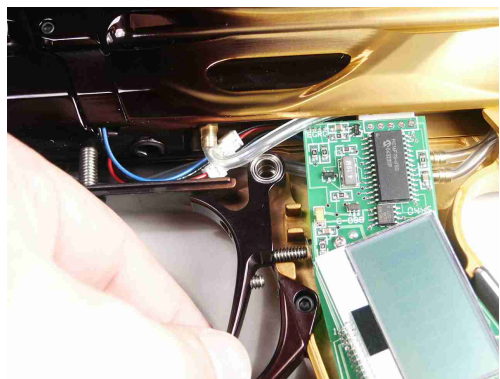
Step 6

Place spacer with stepped side facing up into frame.



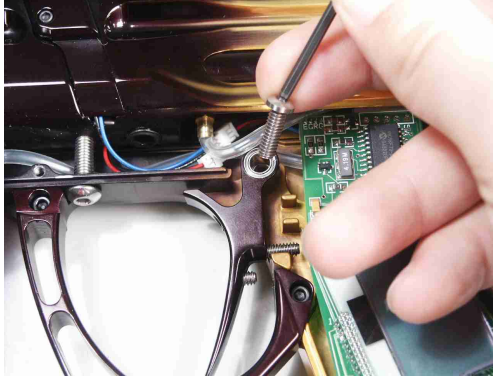
Step 7

Place trigger into frame.



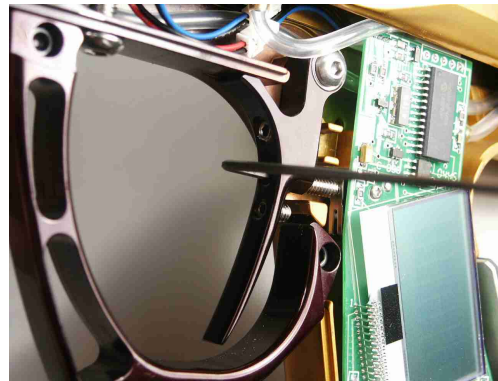
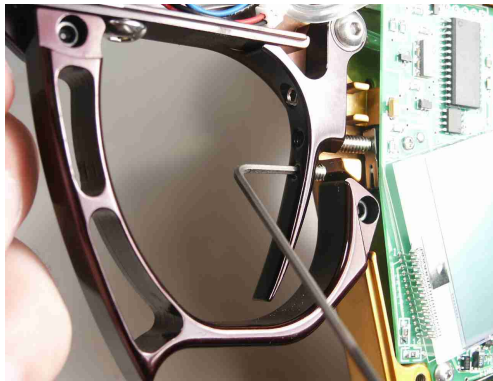
Step 8

Insert trigger attachment screw and tighten.



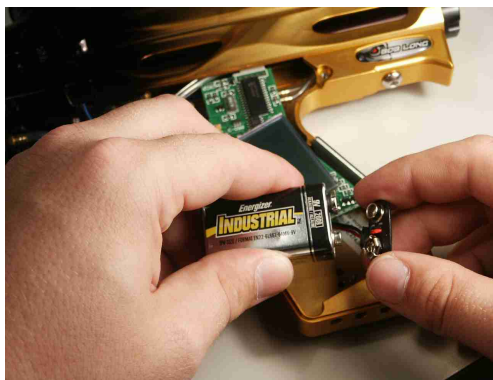
Step 9

Adjust spring tension, forward and back stop screws to your liking.



Step 10

Re-install battery.



Step 11

Re-install top of clamshell.



Step 12

Re-install grips.



You have just successfully installed a CP Roller bearing trigger on your Intimidator!



Custom Products 1640 W Sunrise Blvd, Gilbert AZ 85233
Ph: 480-539-4820 Fax: 480-497-3273 www.customproducts.us