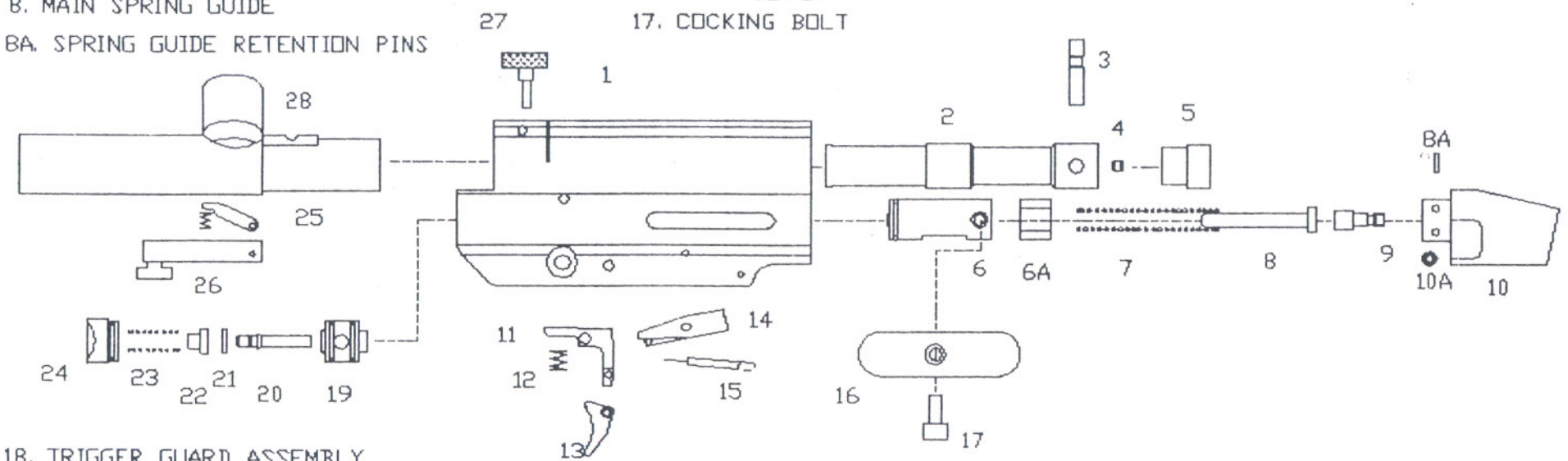


- 1. MAIN HOUSING
- 2. BOLT ASSEMBLY
- 3. BOLT/HAMMER LINK PIN
- 4. LINK PIN SET SCREW
- 5. UPPER OR REAR BUMPER
- 6. HAMMER
- 6A. HAMMER BUMPER
- 7. MAIN SPRING
- 8. MAIN SPRING GUIDE
- 8A. SPRING GUIDE RETENTION PINS

- 9. SPRING ADJUSTMENT SCREW (VELOCITY)
- 10. AIR SYSTEM ADAPTOR (ASA)
- 10A. 006 AIR PASSAGE O'RING
- 11. TRIGGER
- 12. TRIGGER RETURN SPRING
- 13. TRIGGER SHOE
- 14. SEAR
- 15. SEAR SPRING
- 16. DUST COVER
- 17. COCKING BOLT



- 18. TRIGGER GUARD ASSEMBLY
- 19. VALVE HOUSING
- 20. VALVE PIN #2, OR #4
- 21. VALVE SEAL
- 22. VALVE SEAL CUP
- 23. VALVE SPRING
- 24. VALVE END PLUG
- 25. BALL RETENTION LEVER
- 26. P.I.T.A. BLOCK
- 27. SNUB RETENTION SCREW (SPEED WHEEL)
- 28. PROMASTER SNUB

