



OWNER'S MANUAL
Suppressor Shroud
with Barrel

US PATENTS PENDING

Contains:

- Safety Information
- Annotated Diagram
- Operating Instructions

This safety alert symbol indicates important safety messages in this manual. When you see this symbol, be alert to the possibility of personal injury and carefully read the message that follows.

WARNING: DO NOT LOOK DOWN THE BREACH OR BARREL OF THE MARKER WHILE GAS SOURCE IS ATTACHED. WHEN PROPERLY INSTALLED THE BARREL PLUG PROTECTS YOU AND EVERYONE WITHIN RANGE. USE THE BARREL PLUG WHENEVER YOU ARE NOT ACTIVELY ENGAGED IN A PAINTBALL GAME.

WARNING: THIS IS NOT A TOY. MISUSE MAY CAUSE SERIOUS INJURY OR DEATH. EYE PROTECTION DESIGNED FOR PAINTBALL USE MUST BE WORN BY THE USER AND ANY PERSON WITHIN RANGE. RECOMMEND AT LEAST 18 YEARS OLD TO

PURCHASE, 14 YEARS OLD TO USE WITH ADULT SUPERVISION, OR 10 YEARS OLD TO USE ON PAINTBALL FIELDS MEETING ASTM STANDARD F1777-02. READ OPERATION MANUAL BEFORE USING.

WARNING: NEVER SHOOT AT ANYONE WITHOUT PROPER PROTECTIVE EQUIPMENT FOR EYES, EARS, THROAT AND HEAD, WHICH MUST BE WORN AT ALL TIMES. EYE PROTECTION MUST BE DESIGNED SPECIFICALLY FOR PAINTBALL USE. FAILURE TO FOLLOW THESE SAFETY PRECAUTIONS MAY RESULT IN BODILY INJURY INCLUDING BLINDNESS AND DEAFNESS.

Welcome to the JT® Tactical team and thank you for purchasing this high quality JT® paintball accessory.

We at JT® stand committed to providing you with the best product and service available. Your new accessory is designed and manufactured to provide ease of maintenance with trouble free performance. We ask that you read this manual to obtain the maximum enjoyment and safety of your purchase.

Call 1-800-755-5061 or visit our web site at www.jtusa.com for service.



JT USA® LLC.

252 Granite Street, Corona, CA 92879 U.S.A.

1-800-755-5061 www.jtusa.com

Part No.141755-000

04/05

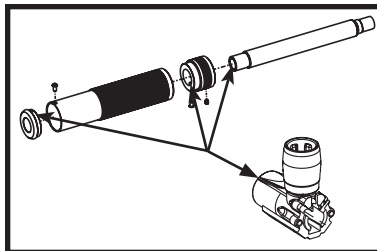
SPECIAL INSTRUCTIONS

Maintenance/Operation

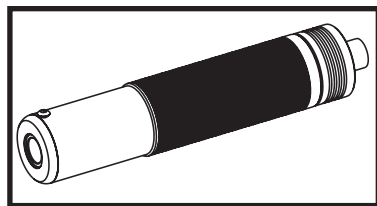
Follow all procedures listed in this manual.

STEP 1. Remove barrel from the marker.

STEP 2. Install the inner barrel of the shroud onto the marker.



STEP 3. Slide the shroud over the inner barrel. Make sure the cuts in the shroud match up with the marker.



STEP 4. With the shroud fully installed, tighten the set screw with a 3/32 hex wrench.

International Service Center List

List de Centre de Service Après-Vente International Lista de Centros de Servicio Internacionales

Canada:
Kolder Canada
905.775.9191
sales@koldercanada.com

Western Europe:
Sport Attitude
33.02.4348.5012
eric.paint@europarm.fr

Central and Eastern Europe:
CMC Sport GmbH
49.6031.73.75.0
techcenter@maxs-sport.com

South America:
Mercenarios Brazil
11.3871.1468
mercenarios@mercenarios.com.br

Mexico & Central America:
Xtreme Planet
55.5290.8190
servicio@xtremeplanet.com

South Africa:
Paintball City
27.11.828.7583
tech@paintballcity.co.za

New Zealand:
Kilwell Sports
07.345.9094
sports@kilwell.co.nz

Check out these other JT-Tactical Accessories:

3 Point Tactical Sling

Tactical Stock

Adjustable Stock

Tactical Carry Handle and Target Sight including windage and elevation adjustments

Tactical Suppressor Shroud with Barrel

Tactical Machine Gun Barrel Shroud

Tactical Armson® 14" Inch Rifled Barrel

Tactical Bi-Pod

Tactical Folding Foregrip

Tactical Remote Coiled Hose System